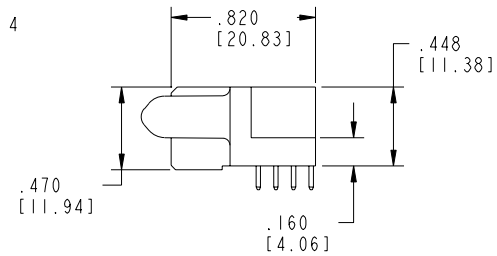
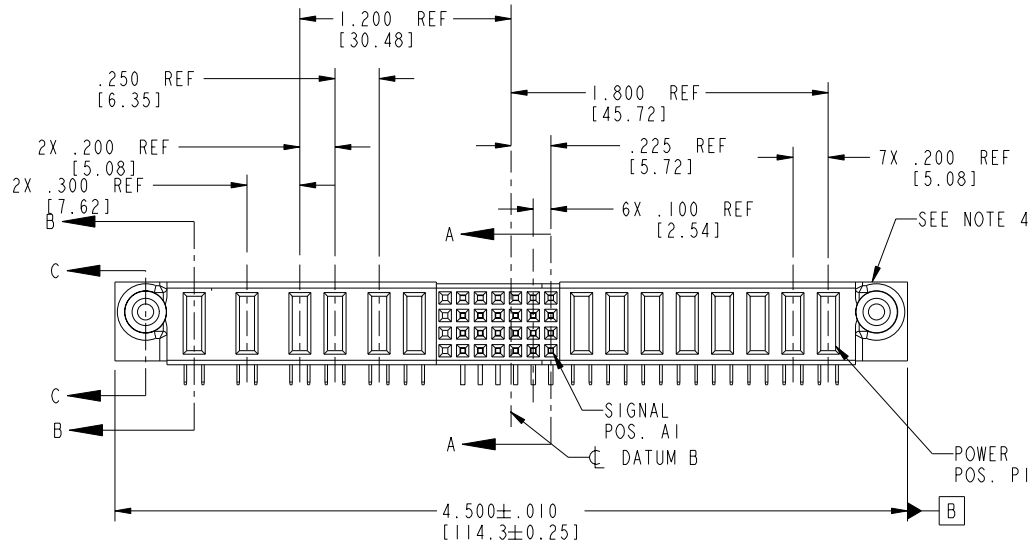
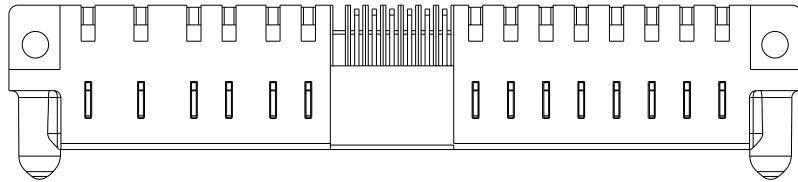


Tous droits strictement réservés. Reproduction ou communication a des tiers interdite sous quelque forme que ce soit sans autorisation écrite du propriétaire. Propriété de c FCI. Droits de reproduction FCI.

All rights strictly reserved. Reproduction or issue to third parties in any form whatever is not permitted without written authority from the proprietor. Property of FCI. Copyright FCI.

PRODUCT NO.	ROWS	POWER							SIGNAL							POWER							E1	
		E2	P14	P13	P12	P11	P10	P9	7	6	5	4	3	2	1	P8	P7	P6	P5	P4	P3	P2		P1
51915-024-- NOTE:3	D C B A							X	H	H	H	H	H	H	H	X	PA	PA	PA	PA	PC	PC	PC	PC
								X	G	G	G	G	G	G	G	X	PA	PA	PA	PA	PC	PC	PC	PC
								X	F	F	F	F	F	F	F	X	PA	PA	PA	PA	PC	PC	PC	PC
								X	E	E	E	E	E	E	X	PA	PA	PA	PA	PC	PC	PC	PC	



CODE	DIM "M" MATING LENGTH	CONTACT TYPE
E	N/A [N/A]	SIGNAL
F	N/A [N/A]	SIGNAL
G	N/A [N/A]	SIGNAL
H	N/A [N/A]	SIGNAL
PA	.042 [1.07]	POWER
PC	.092 [2.34]	POWER
X	OMITTED	OMITTED

mat'l code				SEE NOTE 2		tolerances unless otherwise specified		CUSTOMER	
ltr	ecn no.	dr	date	linear	angles	.XX±.01/0.X±0.3		COPY	
A	V03-0367	MEM	3/31/03			.XXX±.005/0.XX±0.13		projection	
B	DG05-0365	CS	09/28/05			.XXXX±.0020/0.XXX±0.051		INCH/MM	
				dr	engr	M. MOSTOLLER 3/31/03		product family	
				chr	appd	H. BREWBAKER 3/31/03		PwrBlade	
						M. MOSTOLLER 3/31/03		code	
sheet index	revision	B	B	B	B	scale 1:1		size	
	sheet	1	2	3	4			dwg no	
								51915-024	
								sheet 1 of 4	

CUSTOMER		www.fciconnect.com	
title		8P + 28S + 4P + 2ACP	
R/A SOLDER RECEPTACLE		product family	
PwrBlade		code	
213		sheet	
1 of 4		1 of 4	

cage code 22526 4

Pro/E

PDM: Rev:B

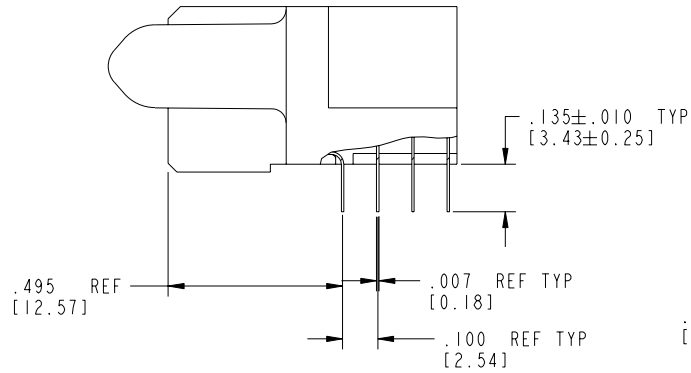
STATUS:Released

Printed: Dec 20, 2010

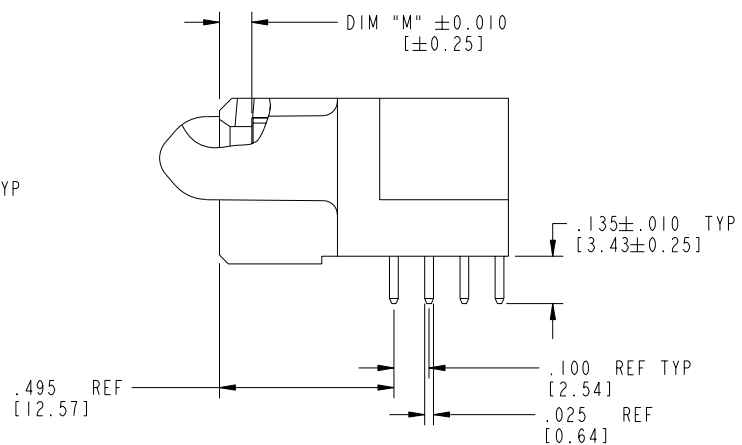
Tous droits strictement réservés. Reproduction ou communication a des tiers interdite sous quelque forme que ce soit sans autorisation écrite du propriétaire. Propriété de c FCI. Droits de reproduction FCI.

All rights strictly reserved. Reproduction or issue to third parties in any form whatever is not permitted without written authority from the proprietor. Property of FCI. Copyright FCI.

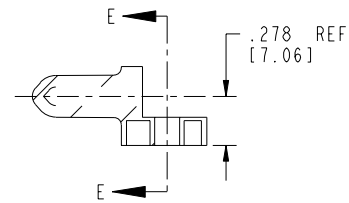
PRODUCT NUMBER
51915-024__
NOTE: 3



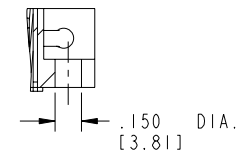
BROKEN-OUT SECTION A-A
SCALE 2:1



BROKEN-OUT SECTION B-B
SCALE 2:1



SECTION C-C



PARTIAL SECTION E-E

mat'l code		SEE NOTE 2		tolerances unless otherwise specified		CUSTOMER		 www.fciconnect.com	
ltr	ecn no.	dr	date	linear	.XX±.01/0.X±0.3	COPY		projection	title
B					.XXX±.005/0.XX±0.13				8P + 28S + 4P + 2ACP R/A SOLDER RECEPTACLE
				angles	.XXX±.0020/0.XXX±0.051				product family
				dr	0°±2°			INCH/MM	PwrBlade
				engr				size	code
				chr	M. MOSTOLLER 3/31/03			A	213
				appd	H. BREWBAKER 3/31/03			scale	sheet
					M. MOSTOLLER 3/31/03			1:1	2 of 4
sheet index	revision sheet								

cage code 22526 4

Pro/E

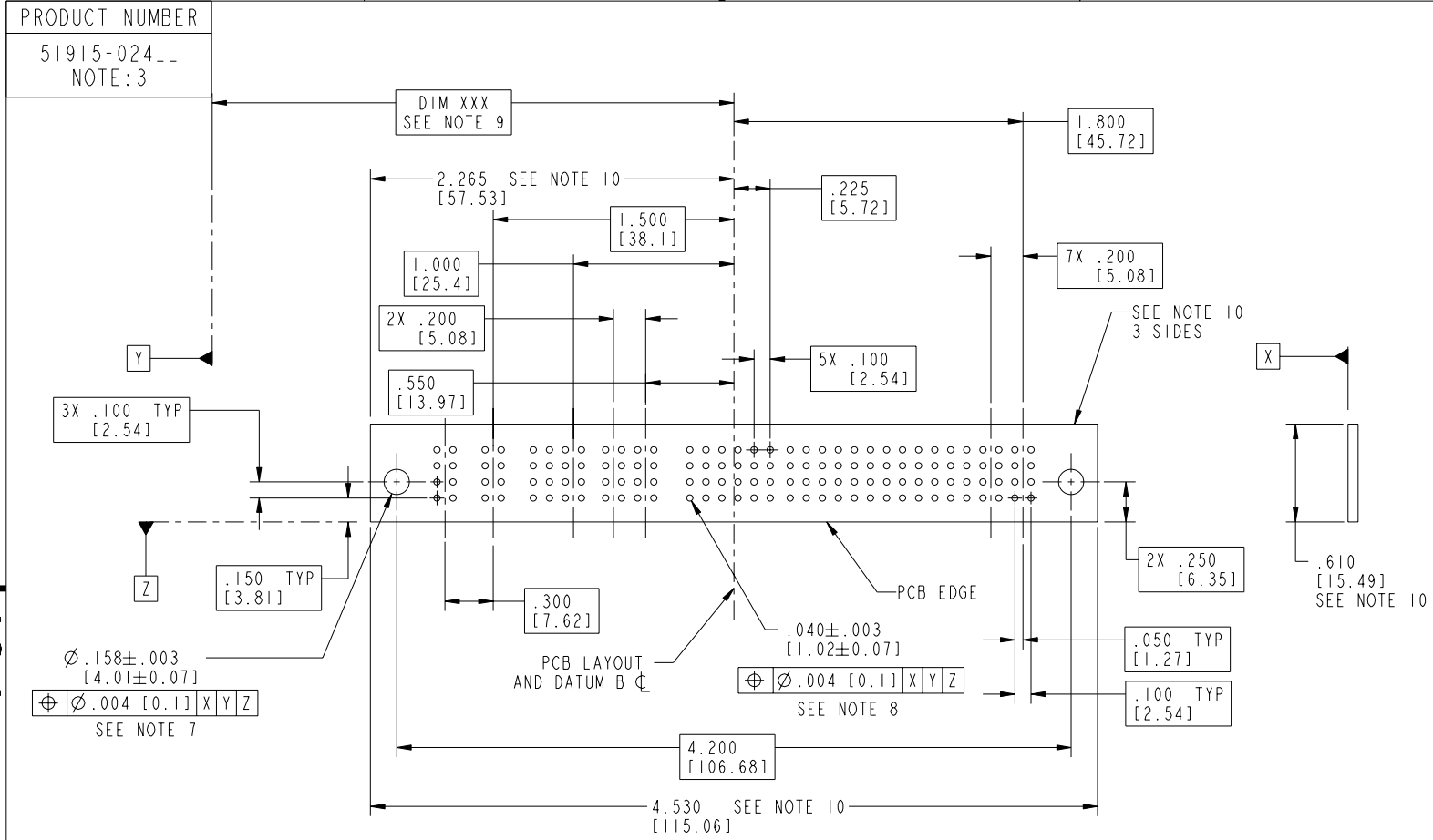
PDM: Rev:B

STATUS: Released

Printed: Dec 20, 2010

Tous droits strictement réservés. Reproduction ou communication à des tiers interdite sous quelque forme que ce soit sans autorisation écrite du propriétaire. Propriété de c FCI. Droits de reproduction FCI.

All rights strictly reserved. Reproduction or issue to third parties in any form whatever is not permitted without written authority from the proprietor. Property of FCI. Copyright FCI.



mat'l code		SEE NOTE 2		tolerances unless otherwise specified		CUSTOMER		 www.fciconnect.com	
ltr	ecn no.	dr	date	linear	.XX±.01/0.X±0.3	COPY		projection	
B				angles	.XXX±.005/0.XX±0.13	INCH/MM		title 8P + 28S + 4P + 2ACP R/A SOLDER RECEPTACLE	
				dr	.XXXX±.0020/0.XXX±0.051	scale 1:1		product family PwrBlade code 213	
				enrg	0°±2°	A		size dwg no 51915-024 sheet 3 of 4	
				chr	M. MOSTOLLER 3/31/03				
				appd	M. MOSTOLLER 3/31/03				
sheet index	revision sheet								

cage code 22526 4

Pro/E

Tous droits strictement réservés. Reproduction ou communication à des tiers interdite sous quelque forme que ce soit sans autorisation écrite du propriétaire. Propriété de c FCI. Droits de reproduction FCI.

FCI

All rights strictly reserved. Reproduction or issue to third parties in any form whatever is not permitted without written authority from the proprietor. Property of FCI. Copyright FCI.

1 | 2

3 |

4

PRODUCT NUMBER
51915-024__
NOTE: 3

NOTES:

1. DIMENSIONS AND TOLERANCES ARE IN ACCORDANCE WITH ASME Y14.5M, 1994 UNLESS OTHERWISE SPECIFIED.

CONNECTOR NOTES:

2. HOUSING MATERIAL: UL 94 V-0 GLASS FILLED

HIGH-TEMP THERMOPLASTIC
POWER CONTACT MATERIAL: COPPER ALLOY
SIGNAL PIN MATERIAL: COPPER ALLOY

3. PLATING:

51915-024 Singal Pin: 30u"/0.76um Au OVER 50u"/1.27um Ni ON THE CONTACT AREA,
AND 100u"/2.54um SnPb PLATING OVER 50u"/1.27um Ni ON THE TERMINATION SECTION.
Power Pin: 30u"/0.76um Au OVER 50u"/1.27um Ni ON THE CONTACT AREA,
AND 100u"/2.54um SnPb PLATING OVER 50u"/1.27um Ni ON THE TERMINATION SECTION.

51915-024LF Singal Pin: 30u"/0.76um Au OVER 50u"/1.27um Ni ON THE CONTACT AREA,
AND 78u"/2.00um Sn PLATING OVER 50u"/1.27um Ni ON THE TERMINATION SECTION.
Power Pin: 30u"/0.76um Au OVER 50u"/1.27um Ni ON THE CONTACT AREA,
AND 78u"/2.00um Sn PLATING OVER 50u"/1.27um Ni ON THE TERMINATION SECTION.

PART NUMBER 51915-024LF MEETS EUROPEAN UNION DIRECTIVE AND OTHER ICOUNTRY REGULATIONS AS DESCRIBED IN GS-22-008.

THE HOUSING WILL WITHSTAND EXPOSURE TO 260° PEAK TEMPERATURE FOR 10 SECONDS IN A WAVE SOLDER APPLICATION WITH A CIRCUIT BOARD.

4. MANUFACTURER'S NAME, P/N, AND DATE CODE TO APPEAR ON THIS SURFACE.

5. PRODUCT SPECIFICATION GS-12-149.
APPLICATION SPECIFICATION BUS-20-067.

PCB NOTES:


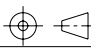

6. ALL HOLE DIAMETERS ARE FINISHED HOLE SIZE.

7. MOUNTING HOLES, WHERE APPLICABLE, ARE UNPLATED.

8. $\varnothing .0453 \pm .0010$ [1.151 \pm 0.025] DRILLED HOLES PLATED WITH
.0003 [0.008] MIN SnPb OVER .001 [0.03]
TO .003 [0.08] Cu PLATING TO ACHIEVE
 $\varnothing .040 \pm .003$ [1.02 \pm .07] HOLE.

9. "DIM XXX" TO BE DETERMINED BY THE CUSTOMER.

10. CONNECTOR KEEP-OUT ZONE.

mat'l code				SEE NOTE 2		tolerances unless otherwise specified		CUSTOMER		 www.fciconnect.com	
ltr	ecn no.	dr	date	linear	.XX±.01/0.X±0.3	COPY		projection		title 8P + 28S + 4P + 2ACP R/A SOLDER RECEPTACLE	
B					.XXX±.005/0.XX±0.13					product family PwrBlade code 213	
				angles	.XXX±.0020/0.XX±0.051					size dwg no	
				dr	0° ± 2°	M. MOSTOLLER 3/31/03		INCH/MM		sheet 4 of 4	
				enr		M. MOSTOLLER 3/31/03		scale 1:1		51915-024	
				chr		H. BREWBAKER 3/31/03		A			
				appd		M. MOSTOLLER 3/31/03					
sheet index	revision sheet										

1 | 2

3 |

4

Pro/E

cage code 22526

PDM: Rev:B

STATUS: Released

Printed: Dec 20, 2010